

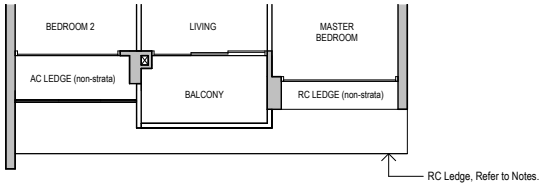
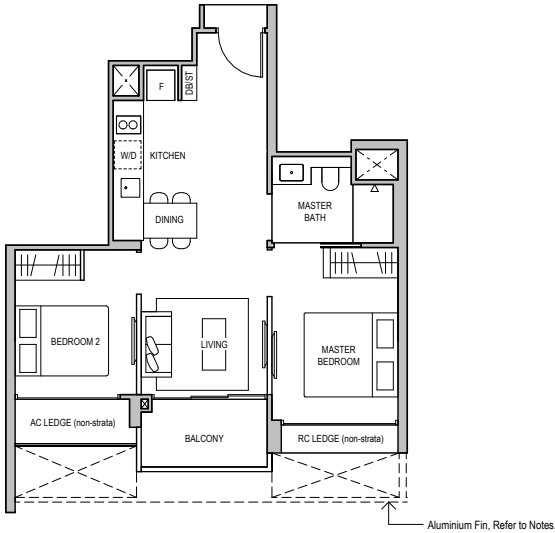
2 BEDROOM

TYPE B1

53 sqm (570 sqft)

BLOCK 61
#03-03 to #22-03

BLOCK 65
#03-14* to #20-14*



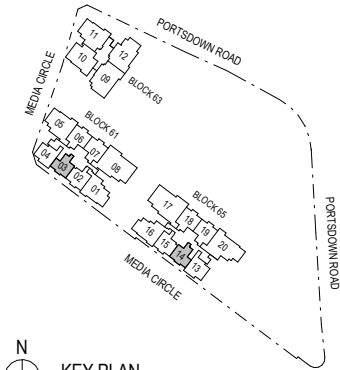
LEGEND

F - Fridge W/D - Washer cum Dryer AC - Air-conditioner RC - Reinforce Concrete
 HS - Household Shelter DB - Distribution Board ST - Store

Aluminium Fin Applicable to :-
 #04-03, #04-14*, #06-03, #06-14*, #08-03, #08-14*, #10-03, #10-14*, #12-03, #12-14*,
 #14-03, #14-14*, #16-03, #16-14*, #18-03, #18-14*, #20-03, #20-14*, #22-03

RC Ledge Applicable to :-
 #03-03, #03-14*

DISCLAIMER : Area includes balcony where applicable, and excludes among others, the Air-Conditioner (AC) ledge, airwell, Reinforced Concrete (RC) Ledge and Services Voids. Please refer to the key plan for orientation. All floor plans are approximate measurements only and are subject to government re-survey. Balconies are not to be enclosed except with a balcony screen which has been approved and complies with the Competent Authority's guidelines. The cost of screen and installation shall be borne by the purchaser. For an illustration of the approved balcony screen, please refer to Annex A of this brochure.



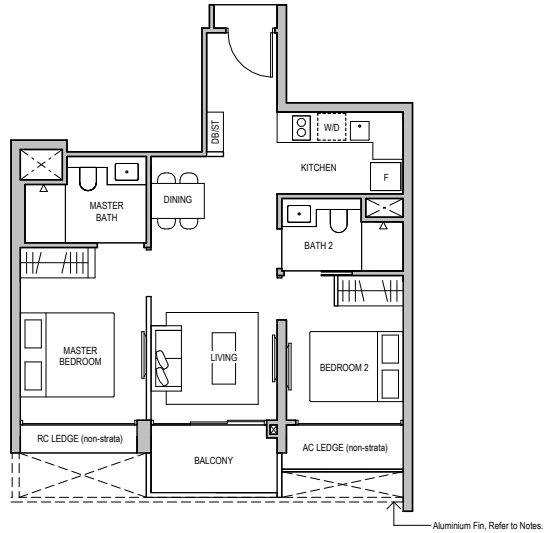
N
 KEY PLAN
 NOT TO SCALE

2 BEDROOM PREMIUM

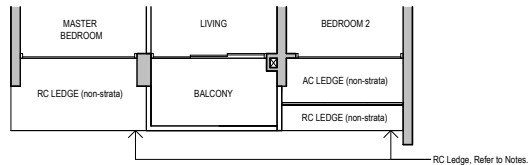
TYPE B2
60 sqm (646 sqft)

BLOCK 61
#03-02 to #22-02

BLOCK 65
#03-15* to #20-15*



Aluminium Fin, Refer to Notes.



RC Ledge, Refer to Notes.

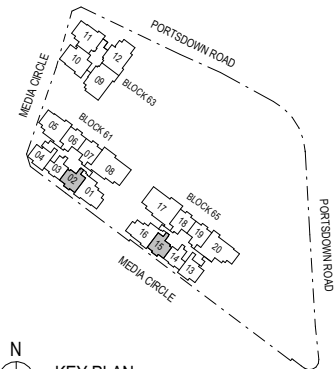
LEGEND

F - Fridge W/D - Washer cum Dryer AC - Air-conditioner RC - Reinforce Concrete
HS - Household Shelter DB - Distribution Board ST - Store

Aluminium Fin Applicable to :-
#04-02, #04-15*, #06-02, #06-15*, #08-02, #08-15*, #10-02, #10-15*, #12-02, #12-15*,
#14-02, #14-15*, #16-02, #16-15*, #18-02, #18-15*, #20-02, #20-15*, #22-02

RC Ledge Applicable to :-
#03-02, #03-15*

DISCLAIMER : Area includes balcony where applicable, and excludes among others, the Air-Conditioner (AC) ledge, airwell, Reinforced Concrete (RC) Ledge and Services Voids. Please refer to the key plan for orientation. All floor plans are approximate measurements only and are subject to government re-survey. Balconies are not to be enclosed except with a balcony screen which has been approved and complies with the Competent Authority's guidelines. The cost of screen and installation shall be borne by the purchaser. For an illustration of the approved balcony screen, please refer to Annex A of this brochure.



N
KEY PLAN
NOT TO SCALE

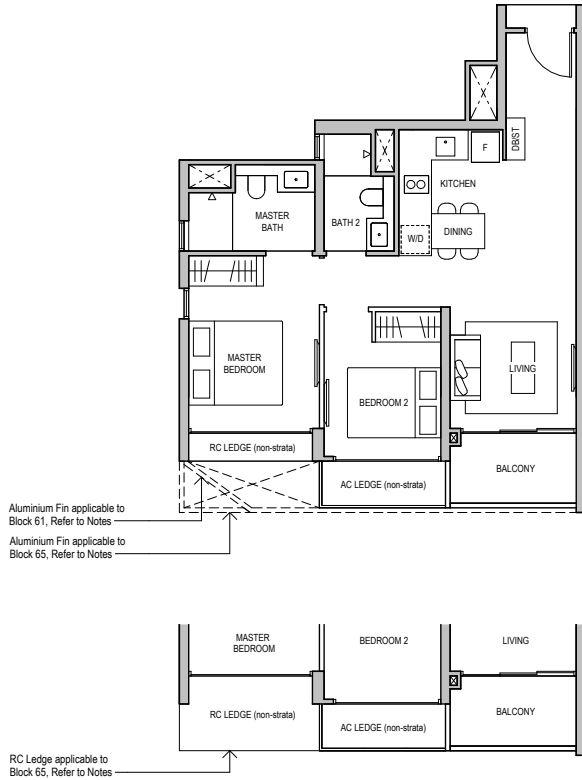
2 BEDROOM PREMIUM

TYPE B3

63 sqm (678 sqft)

BLOCK 61
#03-04 to #22-04

BLOCK 65
#03-13* to #20-13*



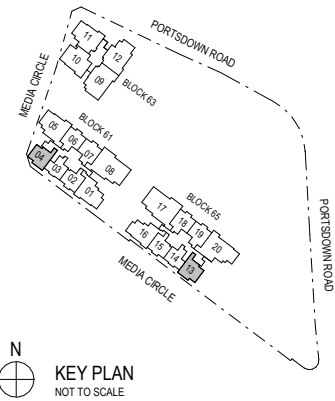
LEGEND

F - Fridge
HS - Household Shelter
W/D - Washer cum Dryer
DB - Distribution Board
AC - Air-conditioner
ST - Store
RC - Reinforce Concrete

Aluminium Fin Applicable to :-
Block 61 : #04-04, #06-04, #08-04, #10-04, #12-04, #14-04, #16-04, #18-04, #20-04, #22-04
Block 65 : #04-13*, #06-13*, #08-13*, #10-13*, #12-13*, #14-13*, #16-13*, #18-13*, #20-13*

RC Ledge Applicable to :-
Block 65 : #03-13*

DISCLAIMER : Area includes balcony where applicable, and excludes among others, the Air-Conditioner (AC) ledge, airwell, Reinforced Concrete (RC) Ledge and Services Voids. Please refer to the key plan for orientation. All floor plans are approximate measurements only and are subject to government re-survey. Balconies are not to be enclosed except with a balcony screen which has been approved and complies with the Competent Authority's guidelines. The cost of screen and installation shall be borne by the purchaser. For an illustration of the approved balcony screen, please refer to Annex A of this brochure.



2 BEDROOM PREMIUM + STUDY

TYPE B4

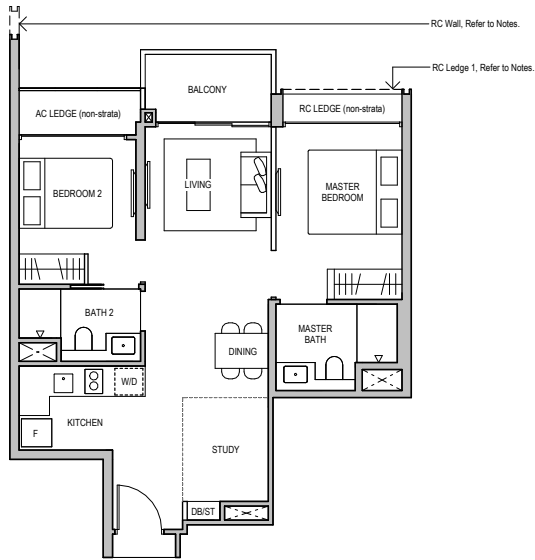
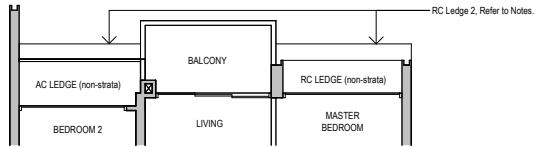
64 sqm (689 sqft)

BLOCK 61

#03-06 to #22-06,
#03-07* to #22-07*

BLOCK 65

#03-18 to #20-18,
#03-19* to #20-19*



LEGEND

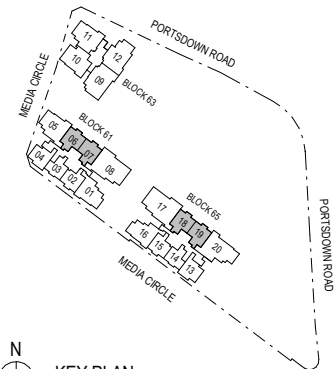
F - Fridge
HS - Household Shelter
W/D - Washer cum Dryer
DB - Distribution Board
AC - Air-conditioner
ST - Store
RC - Reinforce Concrete

RC Ledge 1 Applicable to :-
#03-06, #03-07*, #03-18, #03-19*, #05-06, #05-07*, #05-18, #05-19*, #07-06, #07-07*, #07-18, #07-19*,
#09-06, #09-07*, #09-18, #09-19*, #11-06, #11-07*, #11-18, #11-19*, #13-06, #13-07*, #13-18, #13-19*,
#15-06, #15-07*, #15-18, #15-19*, #17-06, #17-07*, #17-18, #17-19*, #19-06, #19-07*, #19-18, #19-19*, #21-06, #21-07*

RC Ledge 2 Applicable to :-
#03-06, #03-07*, #03-18, #03-19*

RC Wall Applicable to :-
#03-07 to #22-07, #03-18 to #20-18

DISCLAIMER : Area includes balcony where applicable, and excludes among others, the Air-Conditioner (AC) ledge, airwell, Reinforced Concrete (RC) Ledge and Services Voids. Please refer to the key plan for orientation. All floor plans are approximate measurements only and are subject to government re-survey. Balconies are not to be enclosed except with a balcony screen which has been approved and complies with the Competent Authority's guidelines. The cost of screen and installation shall be borne by the purchaser. For an illustration of the approved balcony screen, please refer to Annex A of this brochure.

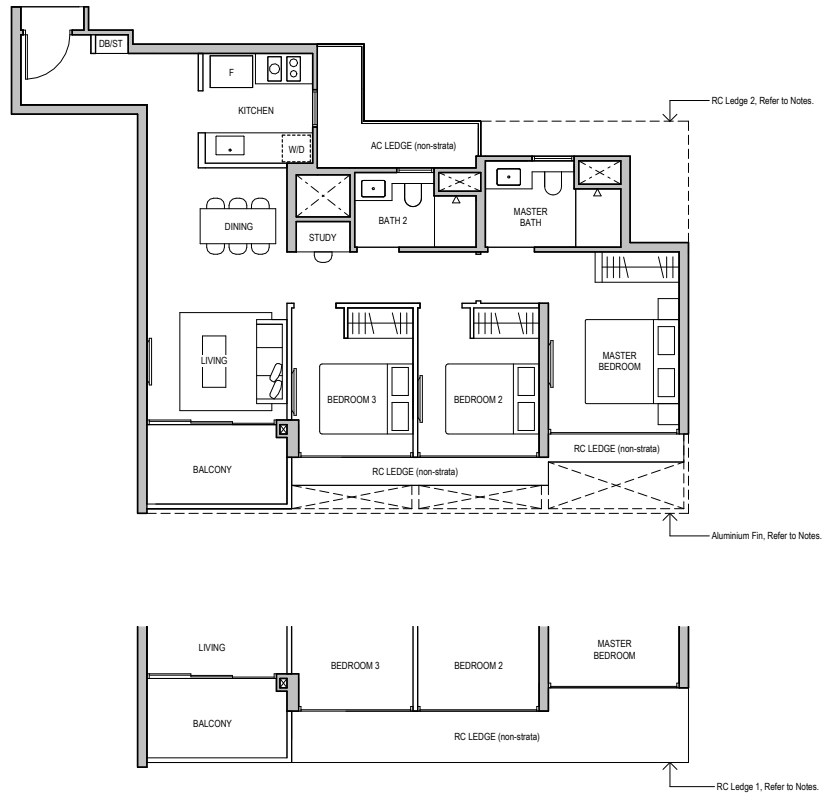


3 BEDROOM + STUDY

TYPE C1
84 sqm (904 sqft)

BLOCK 61
#03-01 to #22-01

BLOCK 65
#03-16* to #20-16*



LEGEND

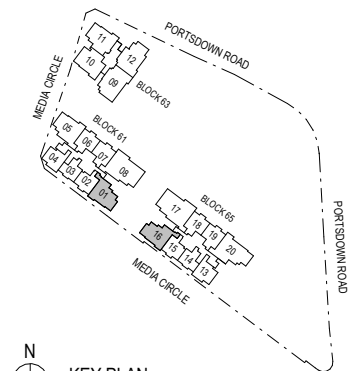
F - Fridge W/D - Washer cum Dryer AC - Air-conditioner RC - Reinforce Concrete
 HS - Household Shelter DB - Distribution Board ST - Store

Aluminium Fin Applicable to :-
 #04-01, #04-16*, #06-01, #06-16*, #08-01, #08-16*, #10-01, #10-16*, #12-01, #12-16*, #14-01, #14-16*, #16-01, #16-16*, #18-01, #18-16*, #20-01, #20-16*, #22-01

RC Ledge 1 Applicable to :-
 #03-01, #03-16*

RC Ledge 2 Applicable to :-
 #03-01

DISCLAIMER : Area includes balcony where applicable, and excludes among others, the Air-Conditioner (AC) ledge, airwell, Reinforced Concrete (RC) Ledge and Services Voids. Please refer to the key plan for orientation. All floor plans are approximate measurements only and are subject to government re-survey. Balconies are not to be enclosed except with a balcony screen which has been approved and complies with the Competent Authority's guidelines. The cost of screen and installation shall be borne by the purchaser. For an illustration of the approved balcony screen, please refer to Annex A of this brochure.

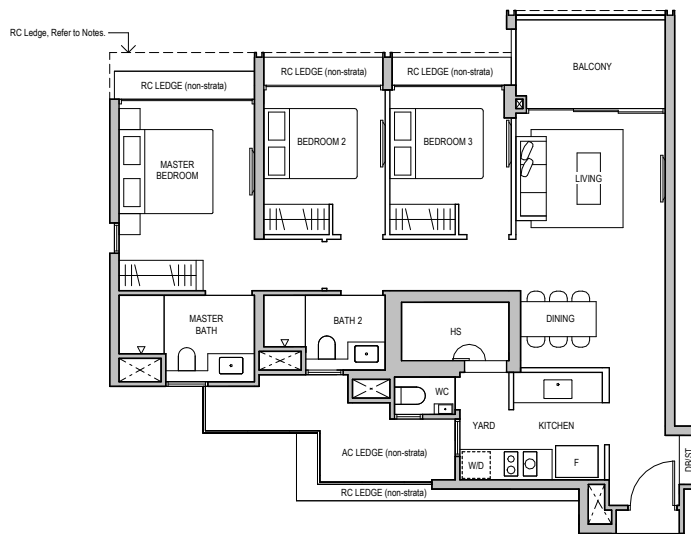


KEY PLAN
NOT TO SCALE

3 BEDROOM PREMIUM

TYPE C2
91 sqm (980 sqft)

BLOCK 61
#04-05 to #22-05

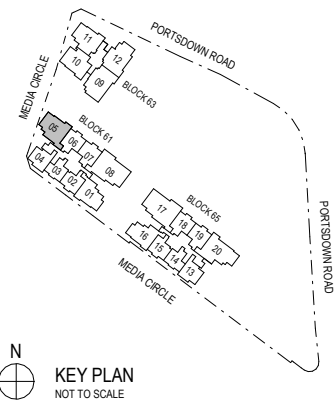


LEGEND

F - Fridge W/D - Washer cum Dryer AC - Air-conditioner RC - Reinforce Concrete
 HS - Household Shelter DB - Distribution Board ST - Store

RC Ledge Applicable to : -
 #05-05, #07-05, #09-05, #11-05, #13-05, #15-05, #17-05, #19-05, #21-05

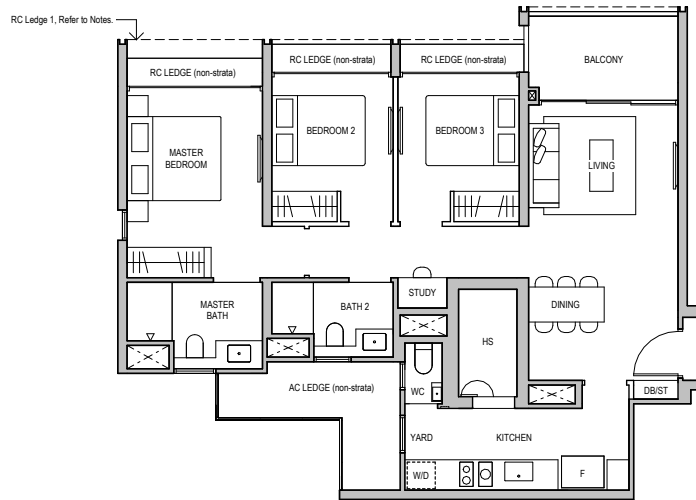
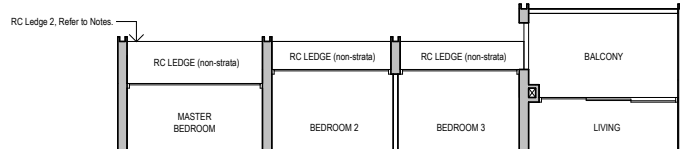
DISCLAIMER : Area includes balcony where applicable, and excludes among others, the Air-Conditioner (AC) ledge, airwell, Reinforced Concrete (RC) Ledge and Services Voids. Please refer to the key plan for orientation. All floor plans are approximate measurements only and are subject to government re-survey. Balconies are not to be enclosed except with a balcony screen which has been approved and complies with the Competent Authority's guidelines. The cost of screen and installation shall be borne by the purchaser. For an illustration of the approved balcony screen, please refer to Annex A of this brochure.



3 BEDROOM PREMIUM + STUDY

TYPE C3
91 sqm (980 sqft)

BLOCK 63
#03-11 to #14-11



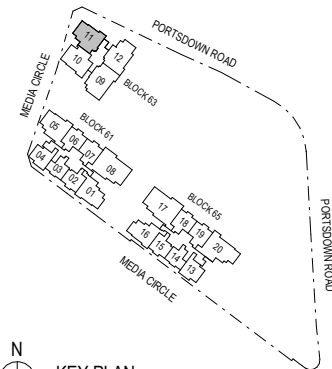
LEGEND

F - Fridge W/D - Washer cum Dryer AC - Air-conditioner RC - Reinforce Concrete
 HS - Household Shelter DB - Distribution Board ST - Store

RC Ledge 1 Applicable to :-
 #05-11, #07-11, #09-11, #11-11, #13-11

RC Ledge 2 Applicable to :-
 #03-11

DISCLAIMER : Area includes balcony where applicable, and excludes among others, the Air-Conditioner (AC) ledge, airwell, Reinforced Concrete (RC) Ledge and Services Voids. Please refer to the key plan for orientation. All floor plans are approximate measurements only and are subject to government re-survey. Balconies are not to be enclosed except with a balcony screen which has been approved and complies with the Competent Authority's guidelines. The cost of screen and installation shall be borne by the purchaser. For an illustration of the approved balcony screen, please refer to Annex A of this brochure.



KEY PLAN
NOT TO SCALE

3 BEDROOM PREMIUM + STUDY

TYPE C4
92 sqm (990 sqft)

BLOCK 63
#04-10 to #14-10

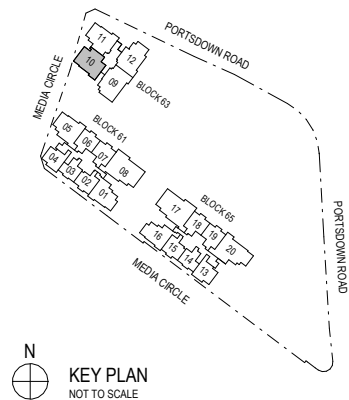


LEGEND

F - Fridge W/D - Washer cum Dryer AC - Air-conditioner RC - Reinforce Concrete
 HS - Household Shelter DB - Distribution Board ST - Store

RC Ledge Applicable to : -
 #05-10, #07-10, #09-10, #11-10, #13-10

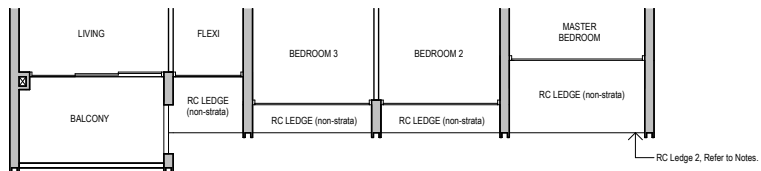
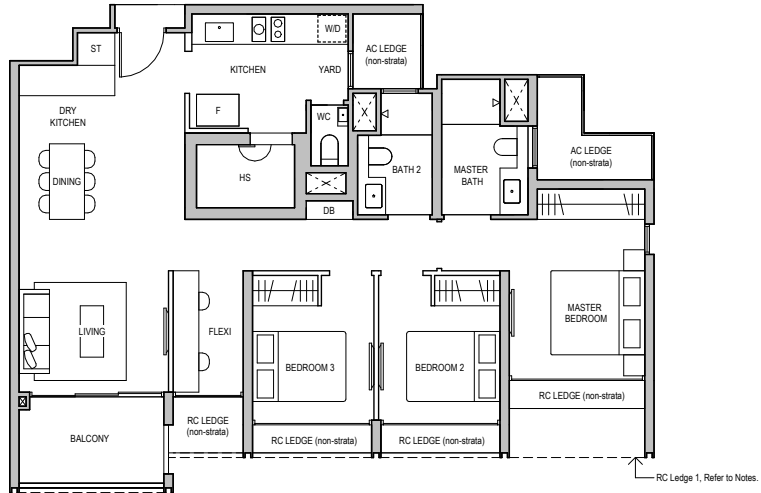
DISCLAIMER : Area includes balcony where applicable, and excludes among others, the Air-Conditioner (AC) ledge, airwell, Reinforced Concrete (RC) Ledge and Services Voids. Please refer to the key plan for orientation. All floor plans are approximate measurements only and are subject to government re-survey. Balconies are not to be enclosed except with a balcony screen which has been approved and complies with the Competent Authority's guidelines. The cost of screen and installation shall be borne by the purchaser. For an illustration of the approved balcony screen, please refer to Annex A of this brochure.



3 BEDROOM PREMIUM + FLEXI

TYPE C5
102 sqm (1098 sqft)

BLOCK 63
#03-12 to #14-12



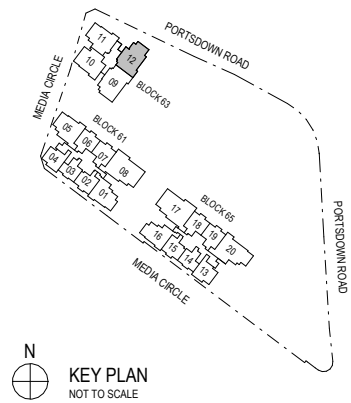
LEGEND

F - Fridge W/D - Washer cum Dryer AC - Air-conditioner RC - Reinforce Concrete
 HS - Household Shelter DB - Distribution Board ST - Store

RC Ledge 1 Applicable to :-
 #05-12, #07-12, #09-12, #11-12, #13-12

RC Ledge 2 Applicable to :-
 #03-11

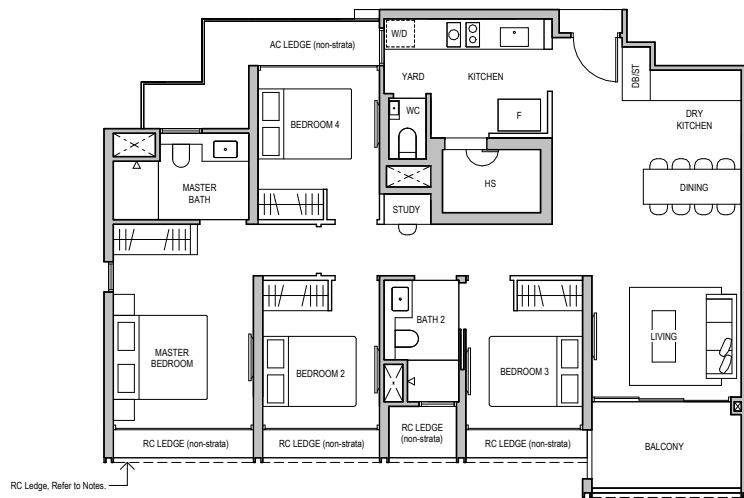
DISCLAIMER : Area includes balcony where applicable, and excludes among others, the Air-Conditioner (AC) ledge, airwell, Reinforced Concrete (RC) Ledge and Services Voids. Please refer to the key plan for orientation. All floor plans are approximate measurements only and are subject to government re-survey. Balconies are not to be enclosed except with a balcony screen which has been approved and complies with the Competent Authority's guidelines. The cost of screen and installation shall be borne by the purchaser. For an illustration of the approved balcony screen, please refer to Annex A of this brochure.



4 BEDROOM PREMIUM + STUDY

TYPE D1
109 sqm (1173 sqft)

BLOCK 63
#03-09 to #14-09

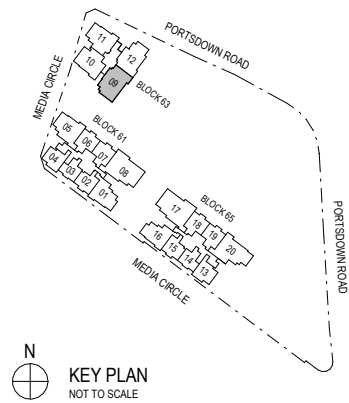


LEGEND

F - Fridge
HS - Household Shelter
W/D - Washer cum Dryer
DB - Distribution Board
AC - Air-conditioner
ST - Store
RC - Reinforce Concrete

RC Ledge Applicable to : -
#05-09, #07-09, #09-09, #11-09, #13-09

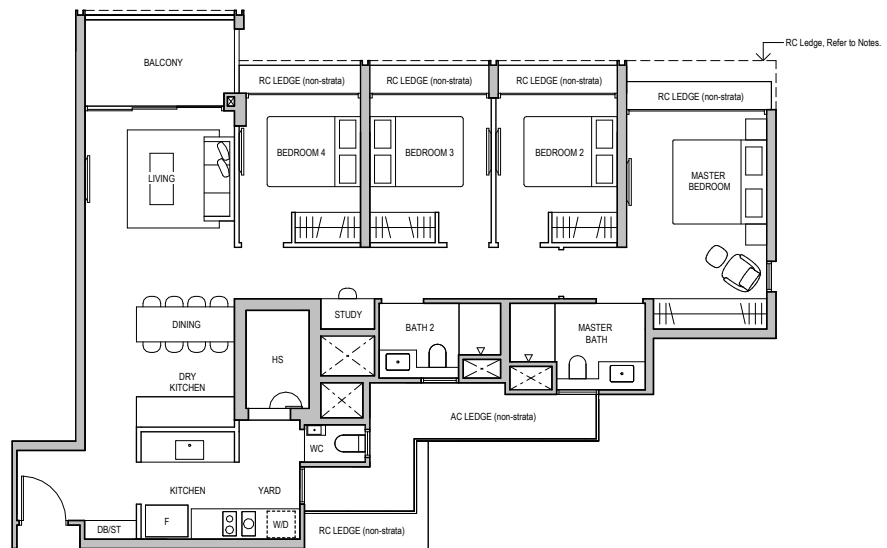
DISCLAIMER : Area includes balcony where applicable, and excludes among others, the Air-Conditioner (AC) ledge, airwell, Reinforced Concrete (RC) Ledge and Services Voids. Please refer to the key plan for orientation. All floor plans are approximate measurements only and are subject to government re-survey. Balconies are not to be enclosed except with a balcony screen which has been approved and complies with the Competent Authority's guidelines. The cost of screen and installation shall be borne by the purchaser. For an illustration of the approved balcony screen, please refer to Annex A of this brochure.



4 BEDROOM PREMIUM + STUDY

TYPE D2
112 sqm (1206 sqft)

BLOCK 65
#03-20 to #20-20

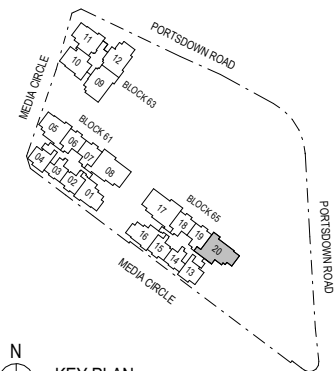


LEGEND

F - Fridge W/D - Washer cum Dryer AC - Air-conditioner RC - Reinforce Concrete
 HS - Household Shelter DB - Distribution Board ST - Store

RC Ledge Applicable to : -
 #05-20, #07-20, #09-20, #11-20, #13-20, #15-20, #17-20, #19-20

DISCLAIMER : Area includes balcony where applicable, and excludes among others, the Air-Conditioner (AC) ledge, airwell, Reinforced Concrete (RC) Ledge and Services Voids. Please refer to the key plan for orientation. All floor plans are approximate measurements only and are subject to government re-survey. Balconies are not to be enclosed except with a balcony screen which has been approved and complies with the Competent Authority's guidelines. The cost of screen and installation shall be borne by the purchaser. For an illustration of the approved balcony screen, please refer to Annex A of this brochure.



N
 KEY PLAN
 NOT TO SCALE

4 BEDROOM SUITE + FLEXI

TYPE D3
132 sqm (1421 sqft)

BLOCK 61
#03-08 to #22-08

BLOCK 65
#03-17* to #20-17*

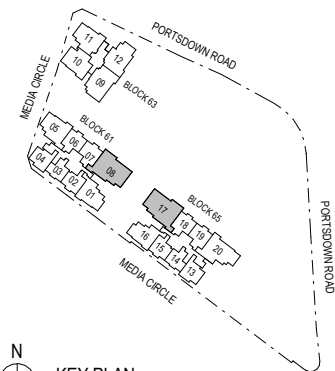


LEGEND

- F - Fridge
- HS - Household Shelter
- W/D - Washer cum Dryer
- DB - Distribution Board
- AC - Air-conditioner
- ST - Store
- RC - Reinforce Concrete
- DW - Dishwasher

RC LEDGE APPLICABLE TO :-
#05-08, #05-17*, #07-08, #07-17*, #09-08, #09-17*, #11-08, #11-17*,
#13-08, #13-17*, #15-08, #15-17*, #17-08, #17-17*, #19-08, #19-17*, #21-08

DISCLAIMER : Area includes balcony where applicable, and excludes among others, the Air-Conditioner (AC) ledge, airwell, Reinforced Concrete (RC) Ledge and Services Voids. Please refer to the key plan for orientation. All floor plans are approximate measurements only and are subject to government re-survey. Balconies are not to be enclosed except with a balcony screen which has been approved and complies with the Competent Authority's guidelines. The cost of screen and installation shall be borne by the purchaser. For an illustration of the approved balcony screen, please refer to Annex A of this brochure.



KEY PLAN
NOT TO SCALE